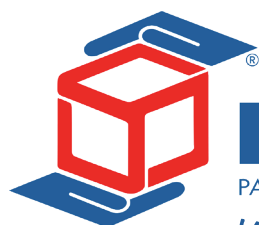


# SEMI-AUTOMATIC WRAPPING MACHINE

SPINNY  
**S 140**



**EFFE** 3TI  
PACKAGING TECHNOLOGIES  
*Your Products, Our Care*

PACKAGING  
TECHNOLOGIES  
MADE IN ITALY

SPINNY  
S 140



## RELIABLE AND FULLY CUSTOMISABLE WRAPPING MACHINE PERFECT FOR SMALL AND MEDIUM COMPANIES

### MAIN FEATURES

Spinny S140 is available in two versions: **PLUS**, with mechanical brake for film tensioning, and **ADVANCED**, with electromagnetic brake for film tensioning..



- > Standard model with rotating table diameter of 1500 mm, is designed for wrapping pallets having dimensions up to 1200 mm (L) X 800 mm (W) and load capacity up to 1200 kg with stretch film.
- > Rotating tables with diameter of 1650 mm, 1800 mm, 2200 mm and 2480 mm have load capacities of up to 2000 kg.
- > Rotating table with diameter of 1500 mm and load capacity up to 2000 kg is available.
- > The column is available for wrapping pallets with heights up to 2100 mm. Optionals 2600 mm or 3100 mm.
- > The rotation speed of the table is regulated by an inverter (rotation adjustable from 5 to 12 rpm).

### VERSION PLUS

All models of SPINNY S140 PLUS are equipped with **MECHANICAL BRAKE** for film tensioning.  
Coil diameter up to 250 mm.

### VERSION ADVANCED

All models of SPINNY S140 ADVANCED are equipped with **ELECTROMAGNETIC BRAKE** for film tensioning.  
Coil diameter up to 250 mm.



*To ensure the maximum safety level of our SPINNY series machines, we've placed the film holder and the control panel on opposite sides of the column. This to avoid the user to be near a moving part of the machine.*

## IMPROVES EFFICIENCY



### WHY SPINNY S140?

- > Perfect and uniform wrapping of all kind of pallets
- > Pallet stability ensured for transport
- > Product protection on pallets ensured
- > It improves the image of the product compared to manual wrapping
- > Minimum maintenance required
- > Extremely easy installation and use
- > Complete documentation in the buyer's language
- > Warranty up to 3 years
- > Over 20 years of experience in the design and manufacture of packaging machines and lines

Thanks to the rapid installation and ease of use, the SPINNY S140 is a pallet wrapping machine that can immediately improve the efficiency of company logistics. Eliminate the annoying, expensive and often dangerous manual wrapping operations, with SPINNY S140 you immediately reach a very high standard of wrapping and stabilization of products on pallets.

### *eclectic* **SPINNY** ENDLESS POSSIBILITIES

Spinny S140, a flexible and easy to customize machine, meets the most different needs. Versions for FLORICULTURE (trolleys), with pallet truck entry, with pneumatic or motorized upper press, with double table, stainless steel, with SMART TOUCH - 4 Programs panel, ... are just some of the available variants.

### CONTACT US TO FIND OUT MORE!



*In EFFE3ti we care a lot about innovation and we are committed to the continuous development of products. Safety is a priority therefore all SPINNY S140 models comply with the applicable machinery directive: production guarantee in accordance with health, safety and environment requirements. SPINNY S140 is an Italian product and is produced in Italy.*

## SPINNY S140 TECHNICAL DATA

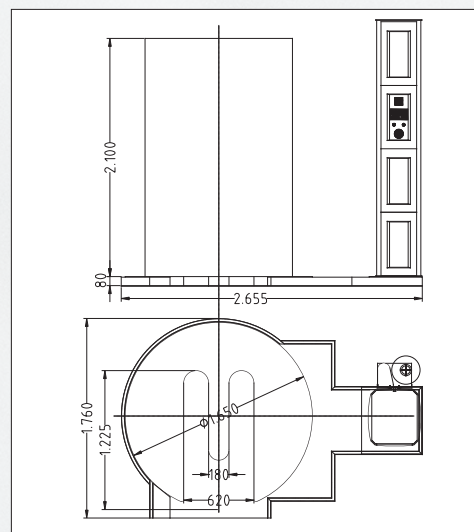
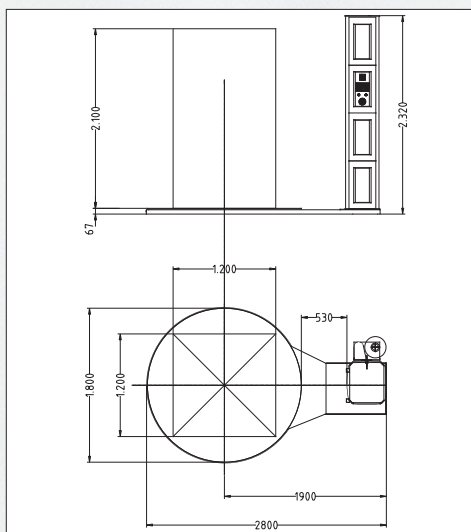
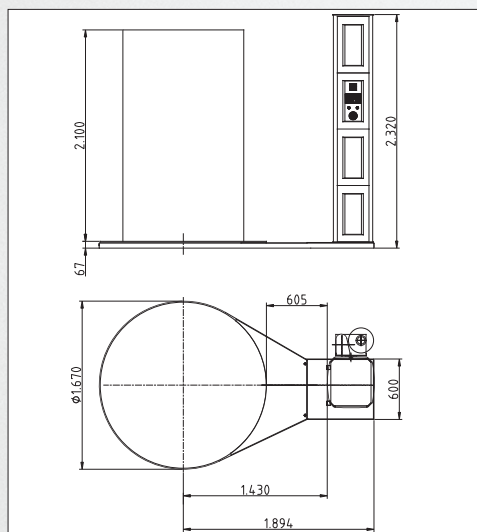
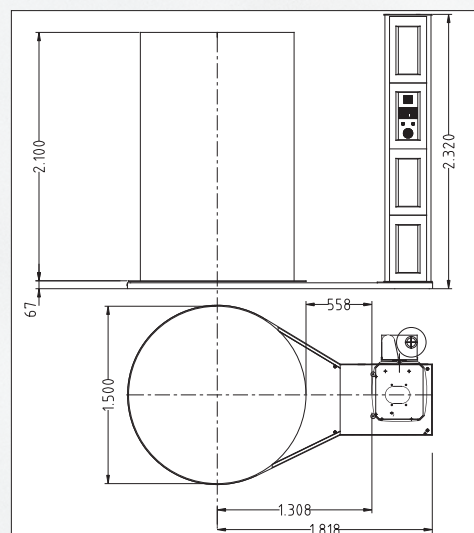
- > Rotating table diameter 1500 mm load capacity 1200 kg
- > Distance between column and rotating table 500 mm
- > Wrapping height up to 2100 mm detected by photocell
- > Separate programming of reinforcement top and bottom wraps
- > Table rotation regulated by inverter from 5 to 12 rpm
- > Table rotation stop position controlled by sensor
- > Customisable film carrier speed
- > Top and bottom wraps programmable separately
- > Film carrier anti-fall device
- > Electronic control panel providing simple wrapping cycle, double wrapping cycle, cycle with stop for top cover positioning, manual wrapping cycle
- > Manual film carrier stop for reinforcement wraps in any position

## POWER SUPPLY

- > Tension: 230 V single phase  
On demand: 400-415 V triple phase  $\pm 10\%$
- > Frequency: 50 Hz
- > Installed power: 0.7 kW
- > Auxiliary energy supply: 24 V DC

## FILM (LLDPE) AND COIL CHARACTERISTICS

- > Thickness: 12 ÷ 23  $\mu\text{m}$
- > Advised thickness: 20  $\mu\text{m}$
- > Internal coil diameter: 76 mm
- > Height: 500 mm
- > Maximum film roll weight: 16 kg
- > Maximum external coil diameter: 250 mm



You Tube



[www.effe3ti.com](http://www.effe3ti.com)

[www.youtube.com/effe3ti](http://www.youtube.com/effe3ti)

[www.facebook.com/effe3ti](http://www.facebook.com/effe3ti)

[linkedin.com/company/effe3ti-srl](http://linkedin.com/company/effe3ti-srl)

